



Enhanced Living and Personal Care



Hyatt M. and Ida M. Cribbs Residential Center

31 N. Park Avenue • Meadville, PA 16335

814-332-9009 • Toll Free 1-877-937-2879

www.wesbury.com



Choose Wesbury - Choose MORE

- For over 100 years, Wesbury has built a strong reputation for exceeding the expectations of the Continuing Care Retirement Community experience.
- As a Christian based, not-for-profit organization, Wesbury is committed to providing excellent services and an enriched way of life.
- Wesbury has received EAGLE accreditation seven consecutive times from The United Methodist Association of Health and Welfare Ministries (UMA), a national network of more than 400 health and welfare-related organizations.
- Grace Rehabilitation and Health Center is 5-star rated by the Centers for Medicare and Medicaid Services, and is currently ranked 15th best Nursing Facility in the state by Newsweek magazine.
- Wesbury is consistently nominated in the Meadville Tribune's Reader's Choice categories of Nursing/Personal Care Homes and has received top honors for eight years in a row.
- We put your independence, security, and care above everything else.

More Safety Measures

At Wesbury, we are continuously searching for new and innovative ways to keep things as easy and familiar as possible in today's "new normal." This includes the process for making a move to our campus. In order to provide you a safe and healthy environment, we have implemented the following:

- All new staff must pass a criminal background check before hire.
- Staff are offered the opportunity to receive the COVID-19 and flu vaccines.
- We require health screening and mask wearing according to current guidelines for staff and visitors.
- Infection control practices are followed in all buildings.
- Wesbury's COVID-19 Leadership Team implements policies and follows guidelines from our regulatory authorities: the Centers for Disease Control (CDC), Medicaid Services (CMS), PA Department of Human Services (DHS), and PA Department of Health (DOH).
- Wesbury maintains current health and safety information on our website and also uses an automated communication system to share important information and updates with residents, their families, and staff.
- Security staff monitor the campus daily.

Please note: Amenity availability may vary according to current healthcare guidelines.

Enhanced Living and Personal Care at Wesbury

Cribbs Residential Center is specifically designed for those who desire to maintain independence, but may require some assistance with daily tasks, bridging the gap between residential living and nursing care.

The attentive staff provides all dining, laundry and housekeeping services as well as scheduled transportation, security and a variety of life enrichment and fitness programs. Through participation in the local community, as well as on campus events, residents may be as active or relaxed as they choose. Residents also find comfort in knowing that additional assistance is always available. Nursing staff are on-site 24 hours every day and can assist with a wide range of personal needs such as bathing, dressing, managing medications and medical care. As the burdens and chores of daily living are lifted, residents are free to enjoy life - with choice, dignity, privacy and security.

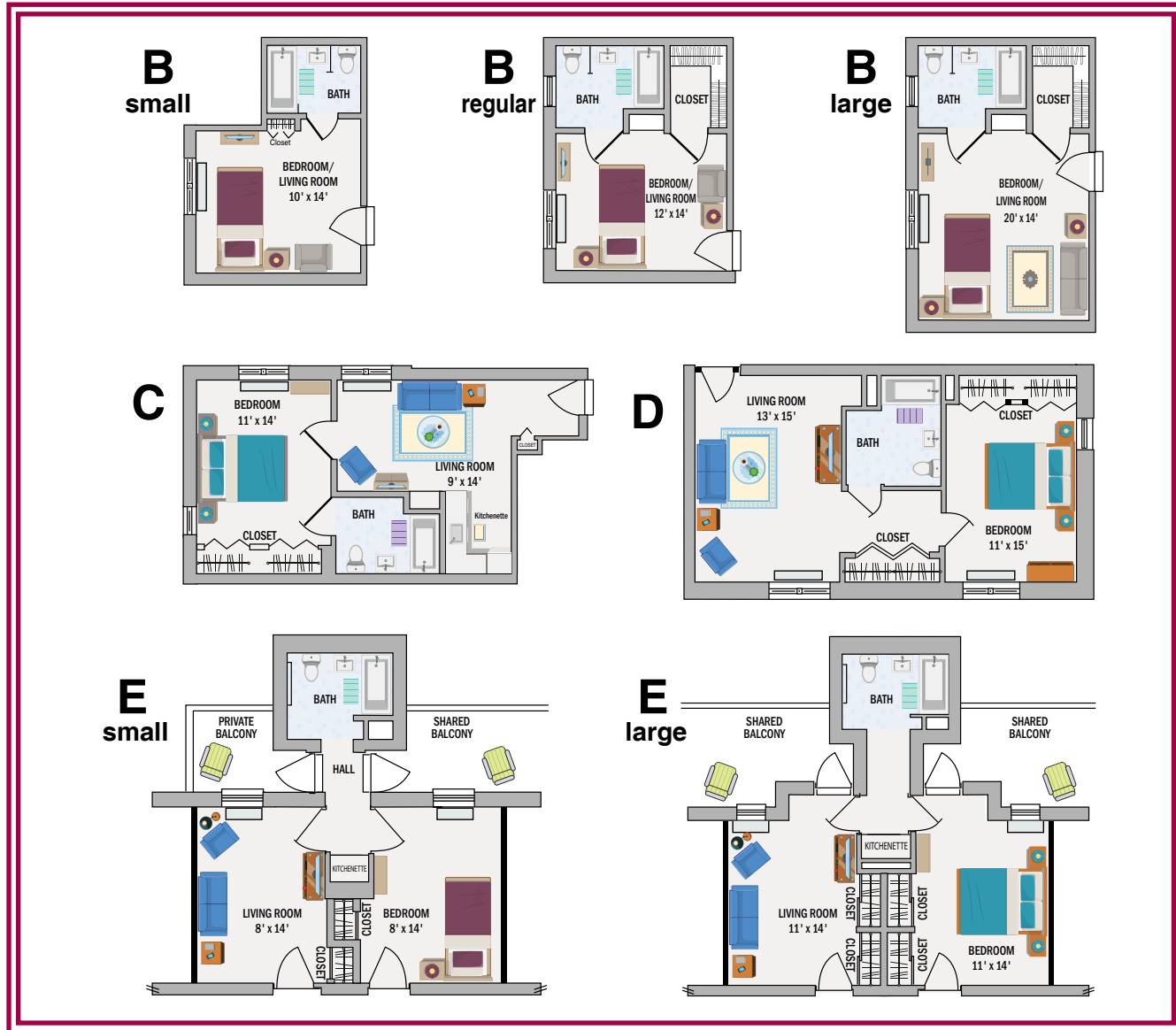
Community Amenities

- 110-acre private, beautifully landscaped campus
- Nearby golf courses, lakes, state parks and outdoor attractions
- Library
- Free wireless internet
- Video conferencing using Skype technology
- Community room for entertainment, lectures and special events
- Beauty/barber salon
- Card rooms
- Craft/recreational room with billiards and exercise equipment
- On-site Chapels
- Guest house accommodations and parking
- Nature trail
- Picnic pavilion and gazebo
- Outdoor gardening areas
- Activities kitchen
- On-site access to public transportation
- ATM
- Common kitchens and laundry room for personal use
- Swimming at Vernon Square
- Art studio



Rates and Information

The following rates and inclusions apply for temporary and long term accommodations.



Wesbury offers a variety of floor plans designed to appeal to differing tastes and budgets. These accommodations await the personal touches and cherished belongings that truly make them home.

Basic monthly fees include:

- All meals are available in our dining room
- Housekeeping services
- All utilities including telephone service
- Basic television cable service
- WiFi
- Complete interior and exterior maintenance
- Scheduled transportation for shopping and outings
- Linen and laundry service
- A full-time Chaplain offering spiritual programs and support
- Life enrichment and fitness programs
- Emergency response system
- Local ambulance membership
- Notary services
- Direct-dial smoke and fire system
- Access to all Wesbury staff including licensed nurses, a registered dietitian, Chaplain, security personnel, Activity Director, Volunteer Program Coordinator, Administrator, and Administrative staff
- Priority access to Grace Rehabilitation and Health Center, the Memory Support Center and rehabilitative therapies

B – Private Suite with Private Bath (rates vary according to square footage)

Small: Monthly Fee: \$129.00 per day x 31 days = \$3,999.00

Regular: Monthly Fee: \$148.00 per day x 31 days = \$4,588.00

Large: Monthly Fee: \$161.00 per day x 31 days = \$4,991.00
Monthly Fee (couple): \$225 per day x 31 = \$6,975.00

C - Two Room Suite - Living Room, Bedroom and Private Bath

Monthly Fee: \$174.00 per day x 31 days = \$5,394.00

Monthly Fee (couple): \$238.00 per day x 31 = \$7,378.00

D - Large Two Room Suite - Living Room, Bedroom, and Private Bath

Monthly Fee: \$187.00 per day x 31 days = \$5,797.00

Monthly Fee (couple): \$251.00 per day x 31 days = \$7,781.00

E - Two Room Suite - Living Room, Bedroom, Private Bath, and Balcony

Small: Monthly Fee: \$174.00 per day x 31 days = \$5,394.00

Monthly Fee (couple): \$238.00 per day x 31 days = \$7,378.00

Large: Monthly Fee: \$187.00 per day x 31 days = \$5,797.00

Monthly Fee (couple): \$251.00 x 31 days = \$7,781.00

Room rates vary depending on type of accommodations.

Short stays are offered for any reason any time of year.*

Simply bring your suitcase, we will provide the rest!

Trial stay: Experience the lifestyle at Cribbs Residential Center before committing to a permanent move.

Recovery: Regain your strength, confidence and independence after a hospital stay or rehabilitation before returning to your home.

Respite: When your caregiver is unavailable or on vacation, take your own and vacation at Wesbury!

Winter: Don't hibernate! Rejuvenate! Join us and enjoy a worry and hassle free winter.

The same inclusions and daily fees apply as required for a long term stay. The basic fee is charged according to the daily rate for the apartment chosen. See rates listed above. Personal Care may be added as described on page four. Services are billed according to the assessment level.

**This program is offered based on apartment availability.*



Photo above shows a furnished apartment available for a trial stay

Fee Schedule

Personal Care:

Personal Care Services such as assistance with personal hygiene, medication, supervision and reminders are available as needed. The daily charge for services is determined by the assessed level of care required.

Level One	- \$10 per day (monthly fee: 31 days x \$10 = \$310)
Level Two	- \$21 per day (monthly fee: 31 days x \$21 = \$651)
Level Three	- \$42 per day (monthly fee: 31 days x \$42 = \$1,302)
Level Four	- \$54 per day (monthly fee: 31 days x \$54 = \$1,674)
Level Five	- \$66 per day (monthly fee: 31 days x \$66 = \$2,046)

Mobility Assistance:

Regulations require additional staff to accommodate residents who need assistance to evacuate in the event of an emergency due to a physical and or cognitive limitation.

The fee for this assistance is \$20/day.

Transportation: \$.50 per mile for vehicle usage and \$15 per hour for staff time.
(minimum charge is \$25)

Beauty Shop:	Permanent	\$55.00	Shampoo, set and cut	\$35.00
	Shampoo & set	\$18.00	Shampoo & blow dry	\$18.00
	Color w/highlights	\$60.00	Highlights/Lowlights	\$ 5.00 (per foil)
	Hair cut - Women	\$20.00	Hair cut – Men	\$15.00
	Beard Trim	\$11.00		

Guest Meals:

Visitors & Guests	
Breakfast	\$8.00
Dinner	11.00
Supper	9.00
Holiday Dinner	15.00

Children under 10 years of age are 1/2 price.

Shryock Guest House for Visiting Relatives/Friends: \$75 per night

Delinquent Charge: 1.25% per month

Medical Supplies and Drugs: At resident's cost

Frequently Asked Questions

Question: Is there an Admission Fee?

Answer: No.

Question: Do I have to sign a lease?

Answer: No. You may stay as long as you wish. You are only billed for the days you reside here.

Question: Are the apartments/rooms private?

Answer: Yes - All are private with private bath.

Question: What does the apartment consist of?

Answer: Floor plans vary. All have a private living space, bathroom and closet. Some have a living room, kitchenette and/or balcony.

Question: Do you have apartments for couples?

Answer: Yes!

Question: Can I bring my own furniture?

Answer: Yes - it is preferable that you bring your own furnishings. Wesbury can provide some furniture if needed. Furniture is provided for winter, respite and trial stays.

Question: Is Personal care assistance available?

Answer: Yes - such as support with administering medications, reminders and assistance with bathing, dressing and grooming can be added for a fee.

Question: Will I be in control of my own financial resources?

Answer: Yes - Residents or responsible parties are in control of their own financial resources.

Question: Can I leave the premises?

Answer: Yes - This is your home, you may come and go as you please.

Question: Can I bring my own vehicle?

Answer: Yes - a valid driver's license, registration and proof of insurance are required.

Question: Are pets permitted?

Answer: Yes! We permit cats, birds, and fish.

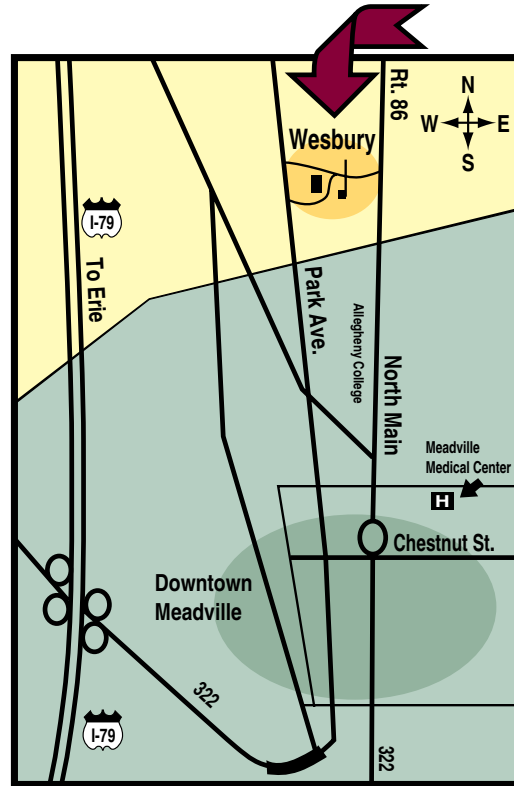
Question: Can Wesbury accommodate special diets?

Answer: Yes - There is a licensed dietitian available.



Directions to Wesbury

Traveling north or south on Interstate 79, visitors should take the Meadville exit 147A. This exit places you on a four lane highway which you will follow for approximately 1-1/2 miles before taking the Park Avenue exit into downtown Meadville. Visitors should travel straight through Meadville to the Wesbury campus. Wesbury is approximately 2-1/2 miles from the Park Avenue exit and is located on the right-hand side of the road.



*For more information
or to schedule a tour, please contact us at
814-332-9009
Toll Free 1-877-937-2879
www.wesbury.com*



Wesbury provides individualized proactive health care and life enrichment services to assist mature adults in maintaining their independence, dignity and spiritual wholeness in a secure, Christian environment.

- Mission Statement -